

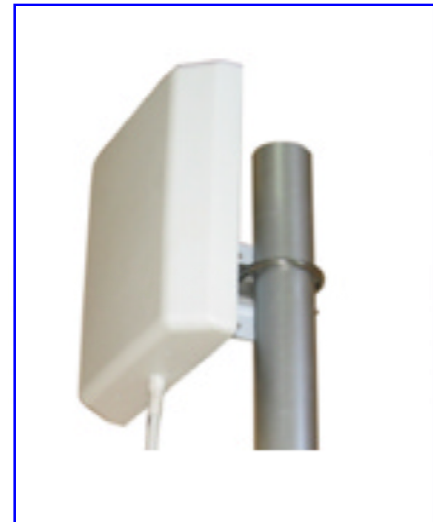
EM-6143 UHF Reader

Swatch Group EM-6143 Reader is a fully integrated, self contained 902~928MHZ wireless identification reader. It includes a radio frequency(RF) module, digital signal processor, power supply, antenna, I/O ports, and serial communications interface. The reader is ideal for parking, security access vehicle registration/identification, and mCommerce applications with a requirement to read EM-4222 tags, windshield sticker, paper labels.

The EM-6143 Reader is configurable to read EM-4222 tags with 64-bit tag ID protocol, as well as tags compliant with International Organization for Standardization (ISO) and ATA standards. It can read tags formatted to a wide range of industry-standard formats, including Wiegand format. Custom Wiegand 26-bit to 34-bit formats can be developed to match identification card formats used by existing security systems.

The EM-6143 Reader transmits an RF signal that is reflected back from an RF tag. The EM-6143 Reader then decodes the tag data carried by the reflected signal. The system transmits this data to local host computer for processing. In multi-lane applications, if necessary, the readers can be synchronized using external hardware to allow operation in close proximity.

The unit has a weatherproof enclosure and is supplied with a pole mount bracket specifically designed for controlled traffic lanes. The EM-6143 Reader is quickly and easily installed and tested by trained authorized personnel. Installation, operation, and maintenance training for EM-6143 is available through Swatch Group's local distributor.



Specifications

Frequency Range 902~928MHZ, FHSS	Antenna Gain 7 dBi to 9.5 dBi available	Input Power 220VAC/50HZ	Output Power 1 W maximum to 200 mW minimum
RF Control By sense input or host command	I/O Control Input : two independent dry contact closures for sense circuits. Output : two independent Form-C contacts		
Reading Distance Read performance varies depending on tag and reader configuration and environment. Optimum read range using the EM-4222 Windshield sticker Label is 3.7m to 5m. Typical read range should be 4.7m to 6.5m.			
Dimensions Size : 250mmL x 170mmW x 45mmD	Mounting Location Pole or wall mount	Enclosure Indoor or outdoor	Humidity 100% condensing
Operating Air Temperature -20C to 70C	Communications Interface RS-232 with wiegand or RS-422 with Wiegand-compatible host interface		

Options

Cable Accessory Kits: Cable Accessory Kits allow flexibility in installation the EM-6143 Reader. Part no. 2112
 Wall Mount Bracket : Allows adjustment in all planes when used to install the EM-6143 reader on a flat surface. Part no. 2143