

ANTI-PASSBACK

When using anti-passback, a card, code, or chip used to enter a door immediately becomes inactive until it is used again at a different reader to exit. This feature is fully programmable and eliminates the passing back of cards under doors to unauthorized users. If the Anti-Passback feature is needed for a door, two relays, and two readers or keypads must be used; one for entry and one for exit.

DIGITAL KEYPADS

Corby manufactures several keypad styles designed for indoor or outdoor use.

Indoor Keypads are supplied with one or two LEDs. LEDs are factory installed on all Corby Keypads to provide the user with a visual feedback of System operation.

Outdoor Keypads are available with or without a cover. A Heavy-Duty cast metal keypad is available for high traffic areas. In addition, Corby manufactures a unit mounted in a lock-box that is designed to be mounted on a pedestal for vehicle applications.



Model 4066
Heavy-Duty Keypad

ACCESS CARDS

SYSTEM 2 supports the use of Magnetic Stripe, Wiegand and Code 39 Bar Code card technologies which require a card to be either "swiped" or "inserted" into the reader.

The System also supports Proximity readers which sense the presence of a valid card when it is within range (3"-30" depending on the reader) and allows access to a door.

All readers are available in weatherproof versions and can be installed in almost any kind of environment including vehicle identification and parking lot access control.

For other input technologies see the next paragraph on Data Chips.



Model 4042
Wiegand Reader

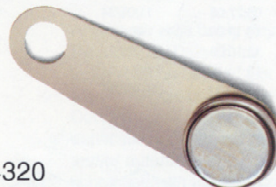


Model 4182
Proximity Reader

DATA CHIPS

Corby Data Chips contain sophisticated electronics to store a personal identification number in a coin shaped, sealed, stainless steel canister. This superior design allows the Data Chip to be easily attached to any smooth surface including existing photo ID cards, badges, or keychains. Innovative packaging protects the electronic circuits inside the canister from dirt, moisture, corrosion and static discharge.

Touching a Data Chip to the reader instantly transfers a 64 bit stream of digital data that, if valid, allows the user access to a secured area. Unlike keys or other security cards, the Data Chip is user-forgiving... it doesn't need to be precisely aligned to transfer its digital data.



Model 4320

Model 4321 Actual Size



Model 4305
Data Chip Reader

DIRECT WIRE CONNECTIONS

All Keypads and Readers, Request-To-Exit buttons, Magnetic Contacts, etc. require a direct, "home run" wire connection to the SYSTEM 2. No interface or adapter boards are required. Other devices may be connected directly to the RS485 buss without a "home run".

SURGE PROTECTION

The SYSTEM 2 uses 32 high speed transorbs and MOV's for on-board surge and spike protection. It is also highly suggested that additional external surge protection is used with each SYSTEM 2.

The Corby Model #4240 Surge Protector is professionally designed to minimize the effect of power surges and lightning strikes. It has two protected outlets and both have voltage protection and EMI/RMI noise filtering built into them. This unit will help reduce the possibility of electronic component failure due to voltage spikes.

For RS232 protection, Corby also stocks a Model #4239 surge protector. This module should be placed between the optional Video Display Terminal (VDT) and the SYSTEM 2 control panel.